



"HIS MASTER'S VOICE"

# RCA VICTOR

THE WORLD'S MOST POPULAR TELEVISION



**INSTRUCTION BOOK**

2019.0

2019-0057

*The information in this booklet will assure you*

*greater enjoyment of the fine RCA Victor instrument you have selected.*

## You Have Become the Owner of A Truly Fine Instrument . . .

Your new RCA Victor television receiver has been carefully designed to afford you the greatest enjoyment through the years.

You now own the most finely engineered instrument directed toward bringing you superb television pictures. New, more powerful circuits, the Eye Witness Picture Synchronizer and the "Golden Throat" tone system are combined to assure you the high quality of reception that has made RCA Victor Canada's favorite television.

Provision is also made for auxiliary connection of a "Victrola" automatic record player. Here is the system that is "All Play and No Work" — now you can hear "The Music You Want When You Want It" . . . played the way you love to hear it. You and your friends will never cease to be amazed at the rare, high quality of reproduction and the ease of operation of the automatic record player.

Your favorite records as well as the television, are heard through the RCA Victor "Golden Throat" accoustical system. This exclusive feature is the reason you and your friends will continue to rave about the tone of your instrument.

*"Golden Throat"*

Finest tone system  
in RCA Victor history



But you have more than the finest RCA television. You have a complete television Furniture Ensemble . . . an important addition to the appearance and enjoyment of your home.

Today, next year and for a long time to come . . . you will be proud that you chose an RCA Victor!

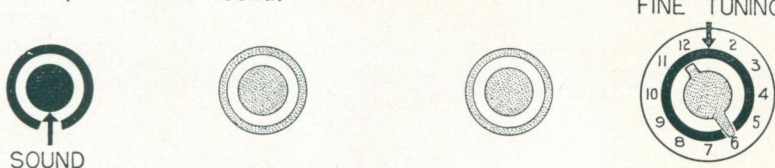
# HOW TO OPERATE YOUR RCA VICTOR TELEVISION RECEIVER

The following instructions apply to the operation of your television receiver when the controls marked HORIZONTAL, VERTICAL, BRIGHTNESS and PICTURE have been disturbed. Once these controls have been correctly adjusted, the HORIZONTAL and VERTICAL controls will seldom require adjustment. The BRIGHTNESS and PICTURE controls need only that slight adjustment required to obtain the most pleasing pictures.

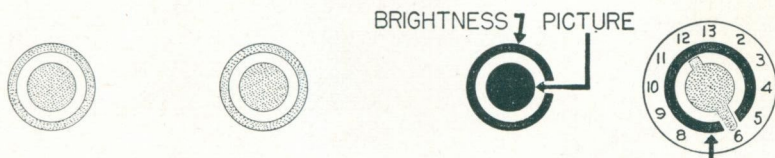
1. First turn OFF-ON SOUND to right turning set ON. Allow approximately 20-30 seconds for warm up. Rotate same knob about halfway to right for average SOUND volume.



2. Set STATION SELECTOR pointer at desired channel number.
3. When sound is heard, adjust FINE TUNING until you get the clearest picture and sound.



4. Adjust SOUND volume as desired.
5. Set PICTURE (inner knob) halfway and turn BRIGHTNESS (outer knob) fully left then slowly right until picture appears. At this point, if picture is moving up and down, diagonally, sideways or is split into segments, correct according to procedures on the following page. Adjust BRIGHTNESS and PICTURE for best dark area shadings and desired contrasts.



6. Further FINE TUNING adjustment may be desired after picture is on for a few minutes.

The picture should look like this...



NORMAL

not this ...



TOO DARK

or this ...



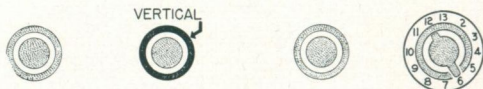
TOO LIGHT

If the picture is moving up or down on the screen like this . . .

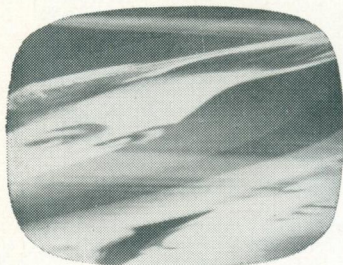


## DO THIS...

Correct by turning VERTICAL control (outer knob) fully right then slowly left until the picture becomes steady.

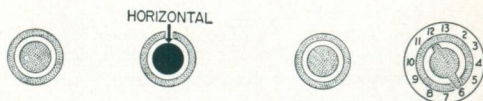


If the picture is moving sideways, diagonally or contains many black and white lines (as illustrated) . . .



## DO THIS...

Turn HORIZONTAL (inner knob) control slowly to the left or right until the correct picture appears. Then turn slightly beyond.



If the sound is distorted or if bars are flickering across the picture in time with the speech or music like this . . .



## DO THIS...

Adjust the FINE TUNING control until the bars disappear and sound becomes clear.





### **AUTOMOBILE INTERFERENCE**

Speckles on the picture indicate interference from the electrical systems of automobiles or other electrical motor-driven appliances. Severe interference of this type may cause vertical picture movement.

### **IDENTIFYING INTERFERENCE**

Every known means of suppressing or eliminating interference has been engineered into your RCA Victor television receiver. The illustrations on this page show how various disturbances appear on picture screens. Interference problems must be given careful consideration at the time of installation. The correct antenna and the proper installation are extremely important in minimizing interference.



### **RADIO INTERFERENCE**

Moving ripples indicate interference from nearby transmitting and receiving short-wave radio equipment.



### **REFLECTIONS**

Multiple images, sometimes known as echoes or ghosts, indicate that the antenna is receiving a direct signal plus a reflected signal from the same transmitter. Signals can be reflected from objects such as buildings and mountains.



### **DIATHERMY INTERFERENCE**

A herringbone pattern on the picture screen indicates interference from diathermy apparatus. When severe, this effect is very marked and may even obliterate part of the picture.



### **WEAK BROADCAST SIGNAL**

A snow effect, as illustrated, indicates in most cases that the receiver is located too far from the transmitting station. When this condition exists, the picture may not hold steady on the screen.

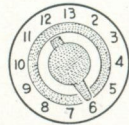
**FOR YOUR  
ADDED ENJOYMENT—**

# The "Victrola" 45 RECORD CHANGER

In a jiffy this instrument can become a television-phonograph combination. By connecting a record changer like the "Victrola" 45 to the phono socket (located on back of the television), you can receive additional enjoyment — also heard through the "Golden Throat" tone system.

After connecting power cord to the proper house outlet, insert phonograph pin plug into phono socket.

SOUND

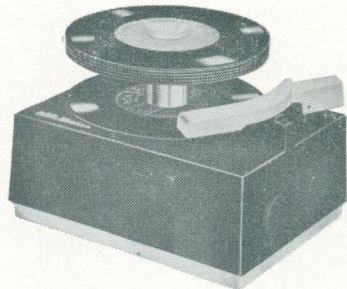


Then turn OFF-ON SOUND to right turning set on and advance about halfway for average SOUND volume. Allow approximately 20-30 seconds for tubes to warm up. Adjust SOUND volume later if desired.

Proceed with your "Victrola" 45 operation as described in the attachment instructions and relax for added enjoyment of your instrument. At the completion of playing remove phonograph pin plug from phono socket to switch receiver back to television operation.

## THE AMAZING "VICTROLA" 45 ATTACHMENT

IT PLAYS EASIER . . . SOUNDS BETTER . . . COSTS NO MORE! Those are three big reasons so many music lovers swing to "45". Simply place a stack of records on the spindle with one easy motion. Then just press one button once and sit back for a long concert of distortion-free listening. "THE MUSIC YOU LOVE BEST . . ." IS ON THRILLING "45" RECORDS. No other system has the conveniences of the RCA Victor "45". The records are non-breakable, the same convenient size and can be stored on an ordinary bookshelf . . . 150 to the foot. Remember, RCA Victor "45" is the system that's "ALL PLAY AND NO WORK!"



**RCA Victor "45" is the record system that's  
ALL PLAY AND NO WORK!**

# What the *Golden Throat* Tone System Means To You

Your television receiver, the phonograph and the radio are all heard and enjoyed through the "Golden Throat" acoustical system . . . an RCA Victor exclusive and the finest tone system in the history of the company. In the "Golden Throat" three elements are coordinated and *exactly balanced* to bring you superb tone. They are:

- (1) The Electronic Amplifier System
- (2) The Loudspeaker
- (3) The Cabinet



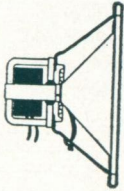
Each element is important to the task of bringing the high tonal fidelity that has made the "Golden Throat" famous. Nearly 30 years of research and the finest materials have gone into the development and manufacture of these three elements of the incomparable "Golden Throat". The rare and beautiful tonal quality of your instrument is the result.

(1) **THE ELECTRONIC AMPLIFIER SYSTEM** Radio and television sound waves and the audio frequency impulses coming from a record being played are all carried through an electronic system which amplifies them over a million times and converts them to electrical energy. Many circuit combinations and ideas were tried and discarded before an amplifier with the present high degree of efficiency was developed.

(2) **THE LOUDSPEAKER** As the electrical energy from the amplifier enters the highly sensitive electro-dynamic loudspeaker, it is converted into the audible sound you hear as you listen to your instrument. But the maximum tone quality you enjoy is conditioned by another element . . .

(3) **THE CABINET** Your cabinet, in addition to being designed as a beautiful piece of furniture, possesses certain definite acoustical qualities that make it an ideal acoustical chamber or "sounding board." The design and construction of your cabinet is an important part of the "Golden Throat." It has been tested and found to be "Just Right" . . . an exact match for your loudspeaker and electronic amplifier.

**ALL THREE ELEMENTS IN BALANCE** Only after many years of various RCA Victor and competitive instruments. Of all models dination of the three elements which you find in the "Golden Throat." The following is an example of what pains RCA Victor engineers have gone to in their quest for perfection. Tests have shown that different people have different types of hearing. It was proven that a person over 40 years old does not hear high or low tones as well as a young person. RCA Victor has studied and made allowances for these physical differences. The three elements of the "Golden Throat" give a balanced tone which is pleasing to young and old alike. During the experimental stages of the "Golden Throat" development, RCA Victor conducted the famous "Curtain Tests." Hundreds of people were selected to listen to identical music played behind a curtain on various RCA Victor and competitive instruments. Of all models played, one version stood out, not only against all other combinations of electronic amplifier, loudspeaker and cabinet that RCA Victor had designed, but also against all other competitive receivers. In that version echoed the rich golden tones of sound reproduction at its finest. And that version became the pattern for the "Golden Throat" you and others can enjoy in instruments engineered by RCA Victor.





## INSTALLATION AND CARE

Installation and adjustments of this instrument with the exception of the operation of the controls described should be made only by qualified personnel.

We suggest that complete installation of your new RCA Victor receiver (including an outdoor antenna when necessary) be made by qualified television service technicians.

**LOCATION** of the new instrument in your home should be given careful consideration.

### **Place the receiver**

—where no bright light will fall directly on the screen or in the eyes of the viewers. Your RCA Victor television picture is bright and clear and can be viewed with comfort in any normally lighted room. Operation of your television receiver in complete darkness is not recommended.

—to afford easy access for operation and maximum visibility in the seating arrangement of your room.

—to permit convenient connections to an AC electrical outlet of the proper voltage and frequency and to an external antenna when required.

—to allow adequate ventilation.

**CAUTION** Adequate ventilation openings are provided in the back and, in some cases, the top and bottom of the cabinet. Care should be taken not to allow these holes or slots to be covered or ventilation impeded in any way.

**ANTENNA** When the location of the receiver is such that a correctly designed external antenna, properly installed, is essential for good reception, an RCA Victor television antenna, which is designed to match the receiver, is recommended. An approved Lightning Arrestor with connection to an earth ground is required with a properly installed outside antenna system.

**CABINET CARE** To preserve the appearance and finish of the cabinet, give it proper care with the occasional application of a high-grade wax polish.

**IMPORTANT** This instrument is designed to operate on 115 volts AC, 25 or 60 cycle power as stated on the nameplate. If in doubt about your power supply, call your power company before plugging in your receiver. The wrong power source may cause damage. For operation on any other power supply, a converter will be necessary. See your dealer.

# RCA VICTOR

## Factory-Service Contract

Your RCA Victor Television Receiver is designed and engineered to provide you with dependable long life service and enjoyment. If trouble is experienced, call the dealer from whom you purchased the instrument. He will be in a position to arrange for Service. RCA Victor Factory Service Contracts are available under several attractive plans to suit your needs and may be purchased through your RCA Victor Dealer. If you have purchased an RCA Victor Factory Service Contract, service under its terms can be obtained by calling the Telephone Number listed on the Contract.

### NOTICE

With authorized installation, your RCA Victor is a thoroughly reliable instrument for your entertainment.

The dealer who sold you this instrument will arrange for its unpacking and installation and the procurement and proper installation of a suitable antenna designed for use in the reception of television broadcasts. He will arrange for you to receive instruction in the functions and operation of the complete combination instrument with an explanation of the controls, in order to obtain best reception and record reproduction.

If you experience any trouble or difficulty with television operation, tune in on a different station or switch to radio or phonograph and tune in again on television later. The cause of the trouble may have been in transmission.

No one but a trained television service technician should make any repairs or adjustments to the television receiver, except for front panel tuning and phonograph adjustments as instructed in this booklet.

For service other than that provided by an RCA factory service contract, consult with your dealer or refer to the organization that installed your instrument.

*Do not attempt to make any adjustment inside the cabinet.*

# Warranty

RCA Victor warrants to the purchaser of this instrument that it will furnish a replacement part for any part thereof which proves upon inspection by RCA Victor to have been defective within 90 days (or within one year in the case of a defective kinescope) from the date of original sale by the RCA Victor dealer, if it was used thereafter in accordance with the terms of this warranty. This warranty shall not apply to any parts of this instrument if it has been installed, altered, repaired or misused in a way that in the opinion of RCA Victor affects the reliability or detracts from the performance of any part of the instrument, or if its serial number or the serial number of any such part has been altered, defaced or removed.

Within 90 days (or within one year in the case of a defective kinescope) from such purchase any such defect must be brought to the attention of the RCA Victor dealer from whom this instrument was purchased. If, upon examination by RCA Victor, the part is found to have been defective within the warranty period, RCA Victor will supply the dealer with a suitable replacement part free of charge.

The obligation of RCA Victor hereunder is limited to making a replacement part available to the dealer, and does not include the furnishing of any labour involved or connected therewith, such as that required to diagnose trouble or to remove or install any such parts; nor does it include responsibility for any transportation expenses in connection therewith.

The foregoing is in lieu of all other warranties, express, implied or statutory, and RCA Victor neither assumes nor authorizes any person to assume for it any other obligation or liability in connection with this instrument.

Date of Purchase.....Purchased from.....  
RCA Victor Franchised Dealer



"HIS MASTER'S VOICE"

**RCA VICTOR COMPANY, LTD.  
MONTREAL, CANADA**

**District Offices**

**Halifax, Montreal, Toronto, Winnipeg, Calgary, Vancouver.**

126975-195-12-53

PRINTED IN CANADA