

Enjoy Radio Entertainment

. . . wherever you go!

RCA Victor Automobile Radio

To fill that pleasure tour with even more enjoyment, or to carry over the long hours of that business trip in your car, enjoy your favorite radio programs as you go. . . with RCA Victor Automobile Radio.

Or even on that motor boat of yours. . . keep in touch with the world, and blend with the rush of water and the steady sweep of the breeze, a lively melody broadcast from the distant city.

RCA Victor Automobile Radio is a nine-tube Superheterodyne with all the advantages of that set in your home. On the inside spread we briefly describe its special features. See your Victor dealer and ask him for a demonstration.

RCA Victor Portable Radio

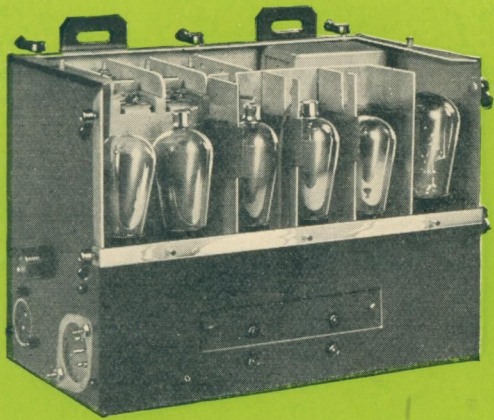
Imagine it! A radio built in a carrying case just like a Portable Victrola, a radio that can be taken right along to the beach, in the canoe, or to the summer camp. . . the RCA Victor Portable Radio.

And what a radio! Complete and thoroughly up to the minute . . . an eight-tube Super-heterodyne of wonderful selectivity and sensitivity. . . brings in distant stations with remarkable ease and clarity. . . weighs only 45 pounds. On the back page of this folder we give full technical facts on this amazing radio. Be sure to hear this portable musical instrument.

For Sale By



Radio Entertainment

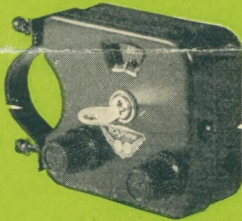


The Chassis

A nine tube Super-heterodyne . . . equal in all respects to the latest regular home sets. Special circuit is designed for "Class B Operation" by which means four times the output from Class A circuits is gained with a resultant saving of B

Battery life and consequent economy of operation. The circuit is provided with a highly efficient Automatic Volume Control which does much to eliminate surging and fading caused by steel structures such as bridges. The drain on the car battery is very small and can be easily compensated for by readjustment of the battery generator. The entire chassis is completely shielded against interference which is further provided against by a complete set of ignition noise suppressors. It is housed in a steel case provided with a practical mounting bracket. Tube complement: 3 UX-236, 4 UX-237, 2 UX-112A.

Control Panel



Fits tightly and snugly on the steering column, and eliminates the necessity of boring the instrument dash. Gives the operator far more convenient and easy control. It is equipped with manual vol-

ume control, large size easy tuning knob, and can be locked when not in use. Dial is illuminated when the instrument is in use. It is provided with a specially designed flexible control shaft that will not kink, twist or jam.

Antenna Plate

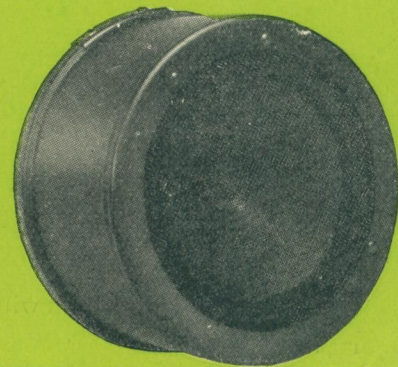
For cars not equipped for automobile radio, eliminating the use of the expensive built-in antenna. Also for open cars on which it is im-



possible to build in an antenna. It is made of sheet steel and can be adjusted in length to suit each particular installation. Its use is made possible only because of the extraordinary sensitivity of the RCA Victor Superheterodyne circuit.

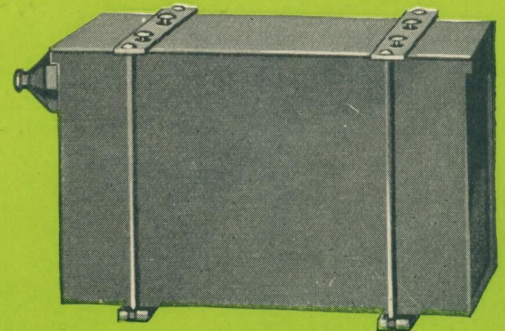
The Speaker

The exclusive RCA Victor Permanent Magnet Dynamic Type Speaker which requires no current from either the "B" or car batteries. It provides tone in every respect equal to the speaker used in the regular home sets, and volume that has no equal in any other automobile radio speaker. It is housed, as illustrated in a special baffle case, completely equipped with mounting brackets.

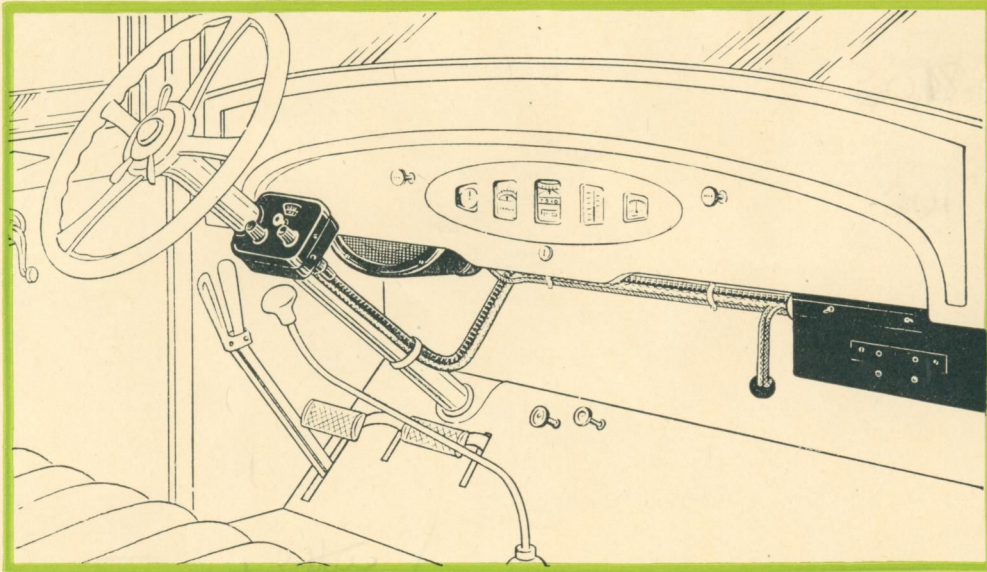


"B" Battery Box

Complete with mounting brackets, and connection plug, made of sheet steel, painted rust resisting. Just large enough for a complete set of "B" batteries. For power the RCA Victor Automobile Radio uses four 45-volt "B" batteries. The "A" supply is furnished by the car battery.



While You Ride!



You see, illustrated above, a typical installation of the RCA Victor M-30, Automobile Radio. The radio chassis itself, and the loudspeaker are installed out of the way underneath the dashboard, and the control panel is mounted on the steering column.

While this is an installation which will be used in most cases, it is not by any means the only possible line-up of the various parts. Any one of the units, with the exception of the control panel can be placed at other locations on the car, to suit the particular needs or desires of the owner.

Each particular unit of the RCA Victor M-30 has been designed with utmost care and consideration, and has been constructed along thoroughly practical lines.

As a radio it is highly sensitive and selective, and will bring in distant as well as local stations with amazing clarity and volume, and offers all the advantages of the big home sets combined with the new thrill of radio entertainment wherever you go.

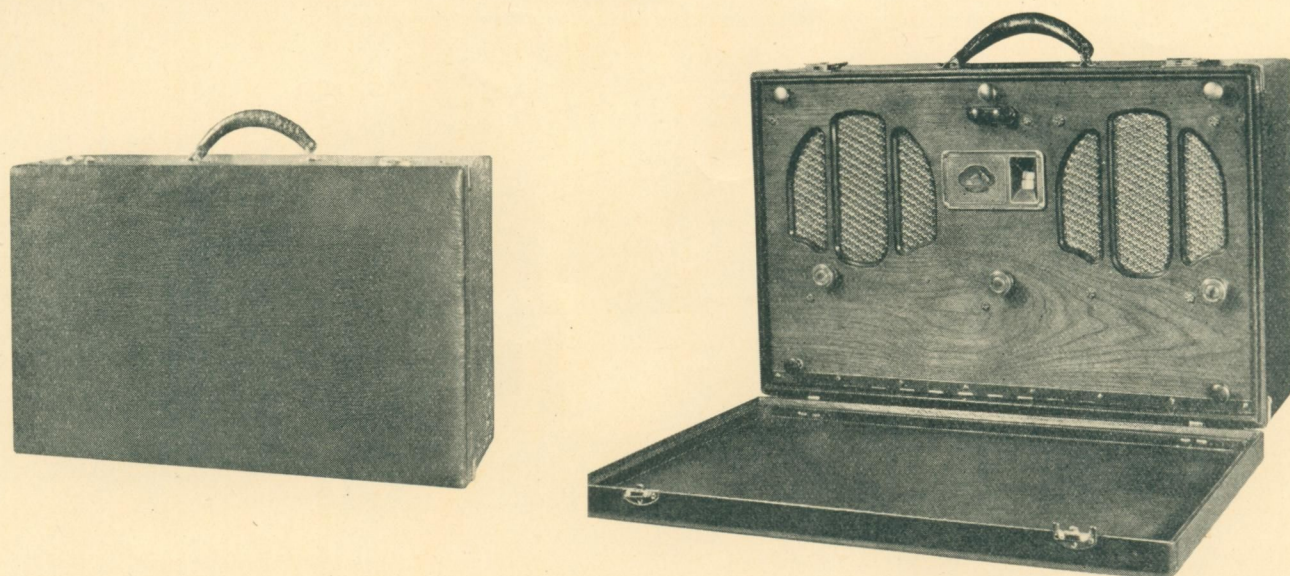
A demonstration of this sensational radio will immediately convince you of its desirability on your car.

OWN AN RCA Victor AUTOMOBILE
RADIO . . . *Sold and Installed Here*

\$112.50
including tubes
less batteries



RCA Victor Portable Radio Model P-31



Take Radio Music With You!

Model P-31 provides a high grade efficient portable radio receiver of RCA Victor performance and quality throughout.

It is an eight tube Super-heterodyne equipped with automatic volume control. This highly effective control cuts down the greater amount of fading and surging and performs with exceptional smoothness and lack of interference and "noise."

The output stage consists of two UX-230 tubes in push-pull and has a maximum output of approximately one watt. The control panel has three adjustments—tuning, volume and the "off-on" switch.



Extreme Economy of Operation!

For power the P-31 uses four 45-volt "B" batteries and two No. 6 dry cells.

For semi-permanent and permanent installation larger-sized "B" batteries and four No. 6 dry cells are recommended for longer battery life. This model operates with such economy that the battery upkeep presents an inconsiderable problem. This small drain on the batteries is brought about by two major RCA Victor developments.

First is what is known as "Class B operation," a scheme of circuit design that gives four times the volume obtained from a conventional circuit using the same number of tubes and yet it uses only half the power.

Second is the RCA Victor exclusive permanent magnet dynamic speaker which uses no "A" or "B" battery current whatsoever.

While no ground is essential to the operation of this receiver, there is a binding post provided for its use. The aerial, which should measure about 30 feet, is wrapped around the special binding posts situated on each of the four corners of the front panel when not in use. When in operation the lid can be entirely removed and put to one side.

Tubes

Radio Frequency Stage	UX-234	Intermediate Frequency	UX-234
1st Detector	UX-232	2nd Detector and A.V.C.	UX-234
Oscillator	UX-230	1st Audio Stage	UX-230
		Output Stage (2)	UX-230

\$114.50
including tubes
less batteries

2018-0046