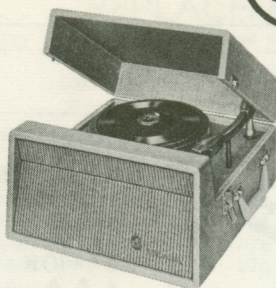




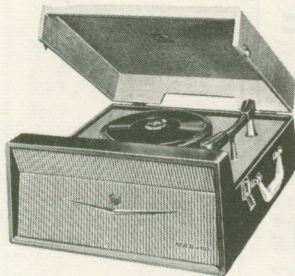
# RCA VICTOR



Model K-370



Model K-371



Model K-373



Model K-374

## PORTABLE RECORD PLAYER

### MODELS

K-371

K-373

K-374

K-370 RECORD PLAYER ATTACHMENT

## SERVICE DATA

— 1958 No. 6 —

ISSUED BY

SERVICE DIVISION

RCA VICTOR COMPANY, LTD.

MONTREAL, CANADA

### ELECTRICAL AND MECHANICAL SPECIFICATIONS

	K-370	K-371	K-373	K-374
Turntable Speeds .....	4 speeds 16-2/3 —33-1/3 —45 RPM —78 RPM			
Pickup .....	Crystal	Crystal	Crystal	Crystal
Tube Complement				
Audio Amplifier .....				6SJ7
Power Output .....		25L6GT	25L6GT	25L6GT
Rectifier .....		Selenium	Selenium	Selenium
Loudspeaker .....		4" PM	5" PM	4" PM
Record Changer Mechanism .....		Model	TU-9	Mechanism

### GENERAL SPECIFICATIONS

#### THE TU9 PLAYER MECHANISM

This unit is designed to play 7", 10" and 12" diameter records at 16 $\frac{2}{3}$ , 33 $\frac{1}{3}$ , 45 or 78 r.p.m. as required.

An on/off knob is provided to enable the turntable to be stopped while the record is being changed, this lever does not switch off the motor but merely disconnects the drive mechanism from the turntable. A separate mains switch must be used to switch off the motor.

The on/off knob should always be set to "off" when the unit is not in use, in order to take the pressure of the motor spindle off the rubber rim of the jockey pulley.

The speeds are altered very simply by rotation of the speed change knob which it is advisable to operate when the motor is running.

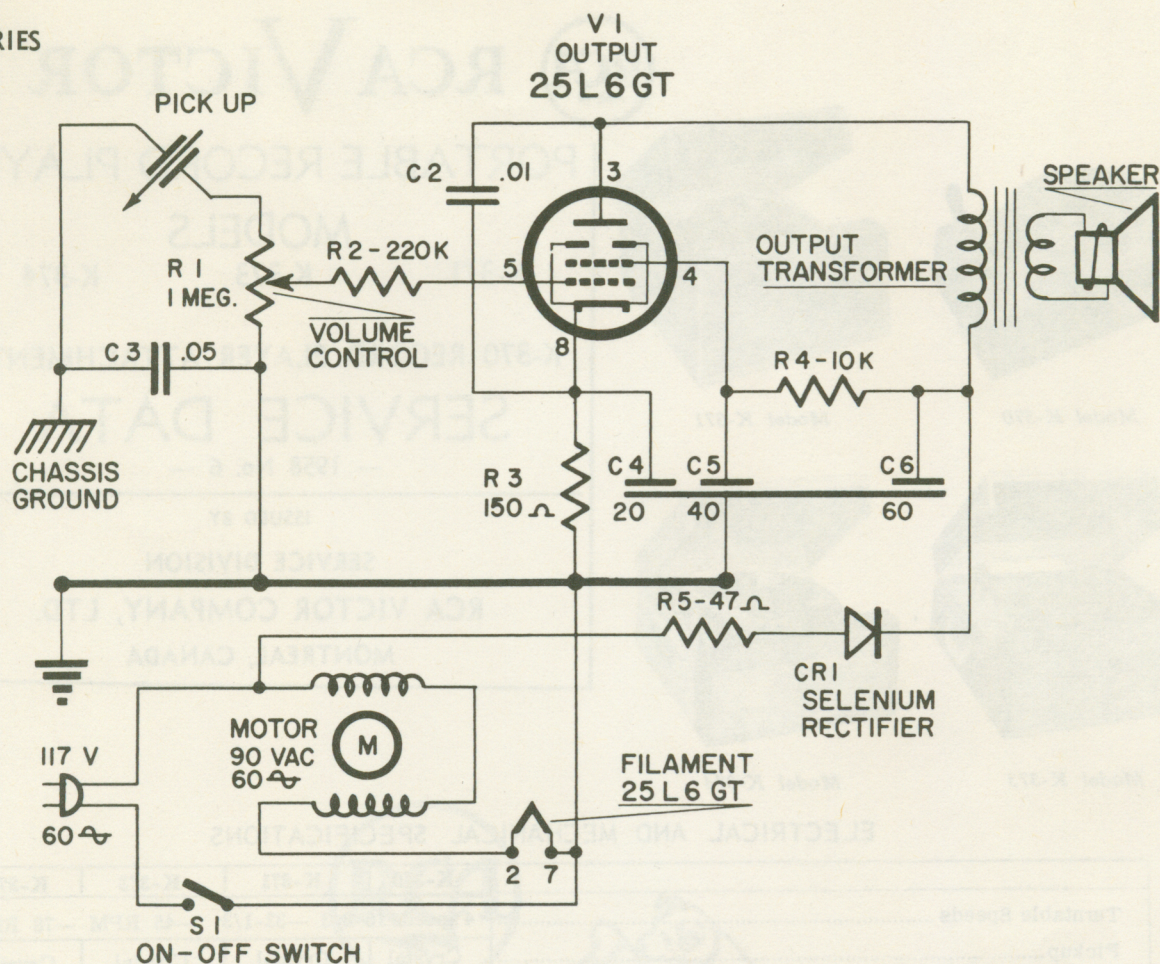
The turntable adapter is provided for use with 7" records having large centre holes. To use this adapter it should be lifted gently until it can be turned in an anti-clockwise direction. After turning it will remain in the raised position and will be sufficiently high above the turntable level to locate a large centre hole record.

When a record with a normal small centre hole is to be played it is only necessary to turn the turntable adapter in a clockwise direction and lower it down below the record level.

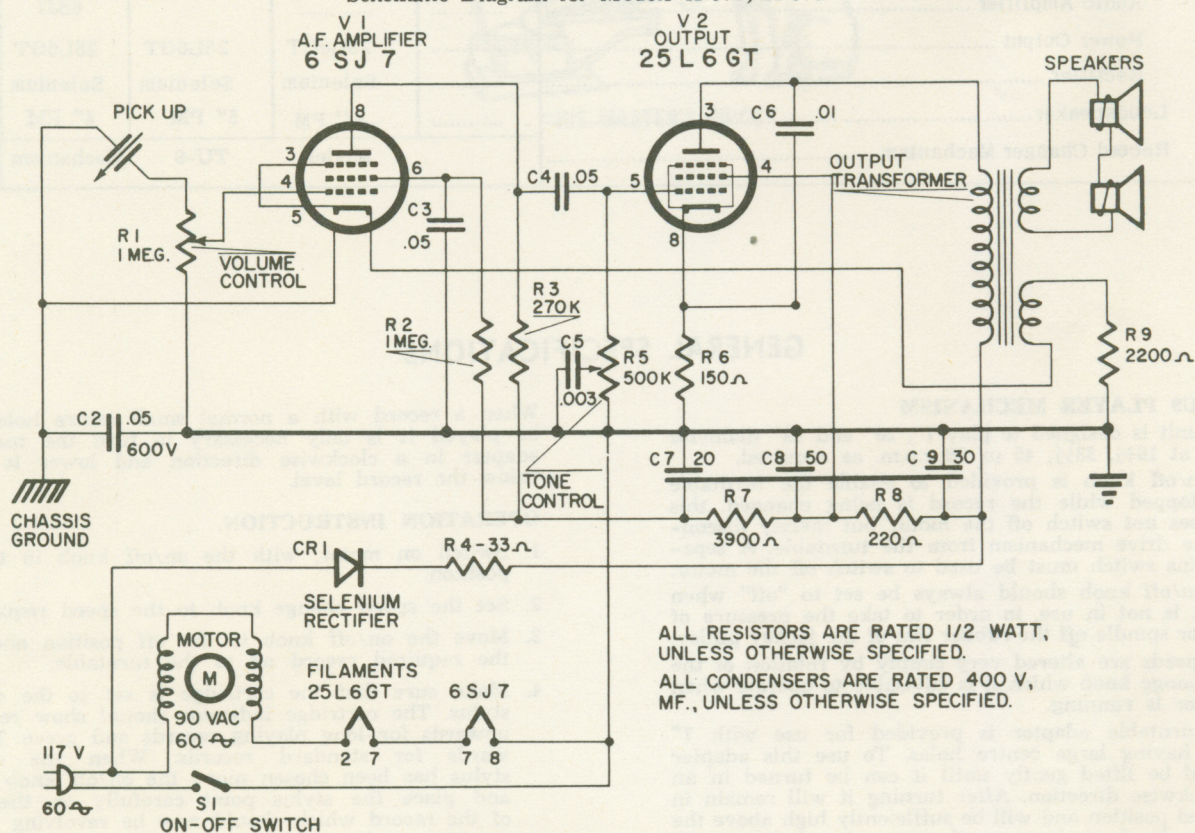
#### OPERATION INSTRUCTION.

1. Switch on motor, with the on/off knob in the on position.
2. Set the speed change knob to the speed required.
3. Move the on/off knob to the off position and load the required record on to the turntable.
4. Make sure that the cartridge is set to the correct stylus. The cartridge indicator should show red L.P. upwards for long playing records and green 78 upwards for standard records. When the correct stylus has been chosen move the on/off knob to on and place the stylus point carefully on the start of the record which should now be revolving at the correct speed.





### Schematic Diagram for Models K-371, K-373



ALL RESISTORS ARE RATED 1/2 WATT,  
UNLESS OTHERWISE SPECIFIED.

ALL CONDENSERS ARE RATED 400 V,  
MF., UNLESS OTHERWISE SPECIFIED.

### Schematic Diagram for Model K-374



## REPLACEMENT PARTS LIST

Insist on Genuine Factory Tested Parts, which are readily identified and may be purchased from Authorized Dealers.

SYMBOL	STOCK NO.	DESCRIPTION	SYMBOL	STOCK NO.	DESCRIPTION
		CHASSIS ASSEMBLY for Model K-374			CHASSIS ASSEMBLY for Models K-371 & K-373
C-1		Capacitor	C-1		Capacitor
C-2		Capacitor-.05 mfd. 10% 600V	C-2		Capacitor-.01 mfd. 10% 400V
C-3		Capacitor-.05 mfd. 10% 600V	C-3		Capacitor-.05 mfd. 10% 600V
C-4		Capacitor-.05 mfd. 10% 600V	C-4		Capacitor-Electrolytic-20 mfd.
C-5		Capacitor-.003 mfd. 10% 400V	C-5	S-20435	Capacitor-Electrolytic-40 mfd, 150V
C-6		Capacitor	C-6		Capacitor-Electrolytic-60 mfd.
C-7		Capacitor-.01 mfd. 10% 400V			
C-8	C-20435	Capacitor-Electrolytic-20 mfd.	R-1	S-20433	Resistor-Volume Control-1 megohm Sw.
C-9		Capacitor-Electrolytic-60 mfd. 150V	R-2		Resistor-220,000 ohms 10% 1/2 W
C-10		Capacitor-Electrolytic-30 mfd.	R-3		Resistor-150 ohms 10% 1/2 W
R-1	S-20433	Resistor-1 megohm-Volume Control Sw.	R-4		Resistor-10,000 ohms 10% 1/2 W
R-2		Resistor-1 megohm 10% 1/2 W	R-5		Resistor-47 ohms 20% 1/2 W
R-3		Resistor-270,000 ohms 10% 1/2 W			
R-4	S-20434	Resistor-33 ohms 10% 10W	CR-1	S-22192	Rectifier-Selenium rectifier-80 MA.
R-5		Resistor-Tone Control-500,000 ohms			
R-6		Resistor-150 ohms 10% 1/2 W			
R-7	S-22192	Resistor-3,900 ohms 10% 1/2 W	T-1	S-20699	Transformer-Output Transformer
R-8		Resistor-220 ohms 10% 1/2 W			
R-9		Resistor-2,200 ohms 10% 1/2 W			
CR-1		Rectifier-Selenium Rectifier-80 MA.			
T-1	S-20448	Transformer-Output Transformer			

\* Indicates New Stock Items.

DESCRIPTION	STOCK NO.	Models			
		K-370	K-371	K-373	K-374
Arm - Tone Arm	*S-22338	*	*	*	*
Case - Grey	*S-22339	*			
Case - Green	*S-22340	*			
Case - Blue	*S-22614		*		
Case - Grey	*S-22341		*		
Case - Green	*S-22342		*		
Case - Yellow	*S-22343		*		
Case - Red	*S-22344		*		
Case - Grey	*S-22345			*	
Case - Green	*S-22346			*	
Case - Yellow	*S-22613			*	
Case - Grey	*S-22347				*
Case - Green	*S-22348				*
Catch - Cover	*S-22357				*
Cartridge - TC8-M	*S-22358	*	*	*	*
Cartridge - TC8-H	*S-22361		*	*	*
Disc. 45 RPM Adap.	*S-22360	*	*	*	*
Escutcheon - Twin Speaker	*S-22362				*
Handle - Plastic - White	*S-22363		*	*	
Hinges - Cover Hinges	S-22368		*	*	*
Knob - Control Clear	S-22370	*	*	*	
Knob - Control Clear	S-22371				*
Motor 4 Speed Motor 60 cycle.	S-22372	*	*	*	*
Posts - Handle Posts	S-22373		*	*	
Speaker - 4" PM	S-20698		*		*
Speaker - 5" PM	S-11236			*	
Stylus - TC8R (45-33 1/4 - 16-2/3)	S-22374	*	*	*	*
Stylus - TC7G (78 RPM)	S-22375	*	*	*	*
Support - Tone Arm Support	S-22376	*	*	*	*
Turntable	S-22397	*	*	*	*
Washer - Turntable "C"	S-22378	*	*	*	*
Instruction Manuals	S-22379	*	*	*	*

\* Indicates New Stock Items.

Only items listed under stock numbers are available as Replacement Parts.

All parts subject to change or withdrawal without notice.



# REPLACEMENT PARTS LIST

SYMBOL	PART NO.	PART DESCRIPTION	QUANTITY	REMARKS
1-1	1-1010	Transformer, 250-0-250V, 100W	1	
1-2	1-1011	Transformer, 250-0-250V, 100W	1	
1-3	1-1012	Transformer, 250-0-250V, 100W	1	
1-4	1-1013	Transformer, 250-0-250V, 100W	1	
1-5	1-1014	Transformer, 250-0-250V, 100W	1	
1-6	1-1015	Transformer, 250-0-250V, 100W	1	
1-7	1-1016	Transformer, 250-0-250V, 100W	1	
1-8	1-1017	Transformer, 250-0-250V, 100W	1	
1-9	1-1018	Transformer, 250-0-250V, 100W	1	
1-10	1-1019	Transformer, 250-0-250V, 100W	1	
1-11	1-1020	Transformer, 250-0-250V, 100W	1	
1-12	1-1021	Transformer, 250-0-250V, 100W	1	
1-13	1-1022	Transformer, 250-0-250V, 100W	1	
1-14	1-1023	Transformer, 250-0-250V, 100W	1	
1-15	1-1024	Transformer, 250-0-250V, 100W	1	
1-16	1-1025	Transformer, 250-0-250V, 100W	1	
1-17	1-1026	Transformer, 250-0-250V, 100W	1	
1-18	1-1027	Transformer, 250-0-250V, 100W	1	
1-19	1-1028	Transformer, 250-0-250V, 100W	1	
1-20	1-1029	Transformer, 250-0-250V, 100W	1	
1-21	1-1030	Transformer, 250-0-250V, 100W	1	
1-22	1-1031	Transformer, 250-0-250V, 100W	1	
1-23	1-1032	Transformer, 250-0-250V, 100W	1	
1-24	1-1033	Transformer, 250-0-250V, 100W	1	
1-25	1-1034	Transformer, 250-0-250V, 100W	1	
1-26	1-1035	Transformer, 250-0-250V, 100W	1	
1-27	1-1036	Transformer, 250-0-250V, 100W	1	
1-28	1-1037	Transformer, 250-0-250V, 100W	1	
1-29	1-1038	Transformer, 250-0-250V, 100W	1	
1-30	1-1039	Transformer, 250-0-250V, 100W	1	
1-31	1-1040	Transformer, 250-0-250V, 100W	1	
1-32	1-1041	Transformer, 250-0-250V, 100W	1	
1-33	1-1042	Transformer, 250-0-250V, 100W	1	
1-34	1-1043	Transformer, 250-0-250V, 100W	1	
1-35	1-1044	Transformer, 250-0-250V, 100W	1	
1-36	1-1045	Transformer, 250-0-250V, 100W	1	
1-37	1-1046	Transformer, 250-0-250V, 100W	1	
1-38	1-1047	Transformer, 250-0-250V, 100W	1	
1-39	1-1048	Transformer, 250-0-250V, 100W	1	
1-40	1-1049	Transformer, 250-0-250V, 100W	1	
1-41	1-1050	Transformer, 250-0-250V, 100W	1	
1-42	1-1051	Transformer, 250-0-250V, 100W	1	
1-43	1-1052	Transformer, 250-0-250V, 100W	1	
1-44	1-1053	Transformer, 250-0-250V, 100W	1	
1-45	1-1054	Transformer, 250-0-250V, 100W	1	
1-46	1-1055	Transformer, 250-0-250V, 100W	1	
1-47	1-1056	Transformer, 250-0-250V, 100W	1	
1-48	1-1057	Transformer, 250-0-250V, 100W	1	
1-49	1-1058	Transformer, 250-0-250V, 100W	1	
1-50	1-1059	Transformer, 250-0-250V, 100W	1	
1-51	1-1060	Transformer, 250-0-250V, 100W	1	
1-52	1-1061	Transformer, 250-0-250V, 100W	1	
1-53	1-1062	Transformer, 250-0-250V, 100W	1	
1-54	1-1063	Transformer, 250-0-250V, 100W	1	
1-55	1-1064	Transformer, 250-0-250V, 100W	1	
1-56	1-1065	Transformer, 250-0-250V, 100W	1	
1-57	1-1066	Transformer, 250-0-250V, 100W	1	
1-58	1-1067	Transformer, 250-0-250V, 100W	1	
1-59	1-1068	Transformer, 250-0-250V, 100W	1	
1-60	1-1069	Transformer, 250-0-250V, 100W	1	
1-61	1-1070	Transformer, 250-0-250V, 100W	1	
1-62	1-1071	Transformer, 250-0-250V, 100W	1	
1-63	1-1072	Transformer, 250-0-250V, 100W	1	
1-64	1-1073	Transformer, 250-0-250V, 100W	1	
1-65	1-1074	Transformer, 250-0-250V, 100W	1	
1-66	1-1075	Transformer, 250-0-250V, 100W	1	
1-67	1-1076	Transformer, 250-0-250V, 100W	1	
1-68	1-1077	Transformer, 250-0-250V, 100W	1	
1-69	1-1078	Transformer, 250-0-250V, 100W	1	
1-70	1-1079	Transformer, 250-0-250V, 100W	1	
1-71	1-1080	Transformer, 250-0-250V, 100W	1	
1-72	1-1081	Transformer, 250-0-250V, 100W	1	
1-73	1-1082	Transformer, 250-0-250V, 100W	1	
1-74	1-1083	Transformer, 250-0-250V, 100W	1	
1-75	1-1084	Transformer, 250-0-250V, 100W	1	
1-76	1-1085	Transformer, 250-0-250V, 100W	1	
1-77	1-1086	Transformer, 250-0-250V, 100W	1	
1-78	1-1087	Transformer, 250-0-250V, 100W	1	
1-79	1-1088	Transformer, 250-0-250V, 100W	1	
1-80	1-1089	Transformer, 250-0-250V, 100W	1	
1-81	1-1090	Transformer, 250-0-250V, 100W	1	
1-82	1-1091	Transformer, 250-0-250V, 100W	1	
1-83	1-1092	Transformer, 250-0-250V, 100W	1	
1-84	1-1093	Transformer, 250-0-250V, 100W	1	
1-85	1-1094	Transformer, 250-0-250V, 100W	1	
1-86	1-1095	Transformer, 250-0-250V, 100W	1	
1-87	1-1096	Transformer, 250-0-250V, 100W	1	
1-88	1-1097	Transformer, 250-0-250V, 100W	1	
1-89	1-1098	Transformer, 250-0-250V, 100W	1	
1-90	1-1099	Transformer, 250-0-250V, 100W	1	
1-91	1-1100	Transformer, 250-0-250V, 100W	1	
1-92	1-1101	Transformer, 250-0-250V, 100W	1	
1-93	1-1102	Transformer, 250-0-250V, 100W	1	
1-94	1-1103	Transformer, 250-0-250V, 100W	1	
1-95	1-1104	Transformer, 250-0-250V, 100W	1	
1-96	1-1105	Transformer, 250-0-250V, 100W	1	
1-97	1-1106	Transformer, 250-0-250V, 100W	1	
1-98	1-1107	Transformer, 250-0-250V, 100W	1	
1-99	1-1108	Transformer, 250-0-250V, 100W	1	
1-100	1-1109	Transformer, 250-0-250V, 100W	1	

